



KaWaTech timber coating

Lengheim Consulting & Entwicklung GmbH

Bahnstraße 16, 2213 Bockfließ



A WORLD FIRST in the coating of dimensionally stable external wooden components!

What would you say if you heard that there was a coating that:

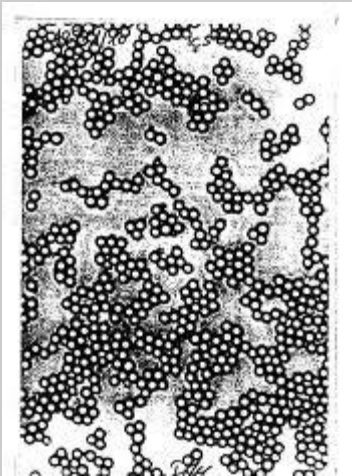
- protects against water penetration (**water vapour permeability**)
- prevents damage caused by weathering (**UV resistant**)
- allows wooden elements to breathe (**vapour permeable**)
- but is completely clear (**transparency**)

Impossible? – Well we have the answer!





KaWaTech is an innovative coating!



The special composition enables a vapour-permeable, water-repellent film to form as it dries. The coating is a completely harmless aqueous dispersion. The **drying time** is between **4 and 24 hours** depending on the temperature. The aqueous base necessitates a **processing temperature of at least 5°C**.



Photographic documentation of sample application (treatment of a weathered wooden door)



weathering of a wooden door



after being coated with KaWaTech

As a result of applying KaWaTech, the water (from heavy rain) is kept out and the treated wooden door remains unchanged after two years.

KaWaTech®
der folienbildende Anstrich



Advantages:

- The coating can be used on all dry and cleaned wooden elements.
- The coating can be applied using a roller or a brush.
- The preset film thickness is 0,4 to 0,8 mm.
- The impermeability to water prevents algae growth and reduces the damage caused.



Customer groups

KaWaTech provides optimal protection for:

- all dimensionally stable external wooden components
- wooden toys
- wooden doors, wooden windows, wooden gates, etc.
- garden fences, wooden balconies, etc.

KaWaTech should be applied, after cleaning, on a dry base in a stable temperature range between +5°C and 45°C and not in direct sunlight.



KaWaTech is

- a world first
- patented in accordance with European patent law
- a high-tech coating consisting which is vapour- permeable
- universally designed for the protection of dimensionally stable external wooden components against moisture and UV rays
- easy to use

a real problem solver!